

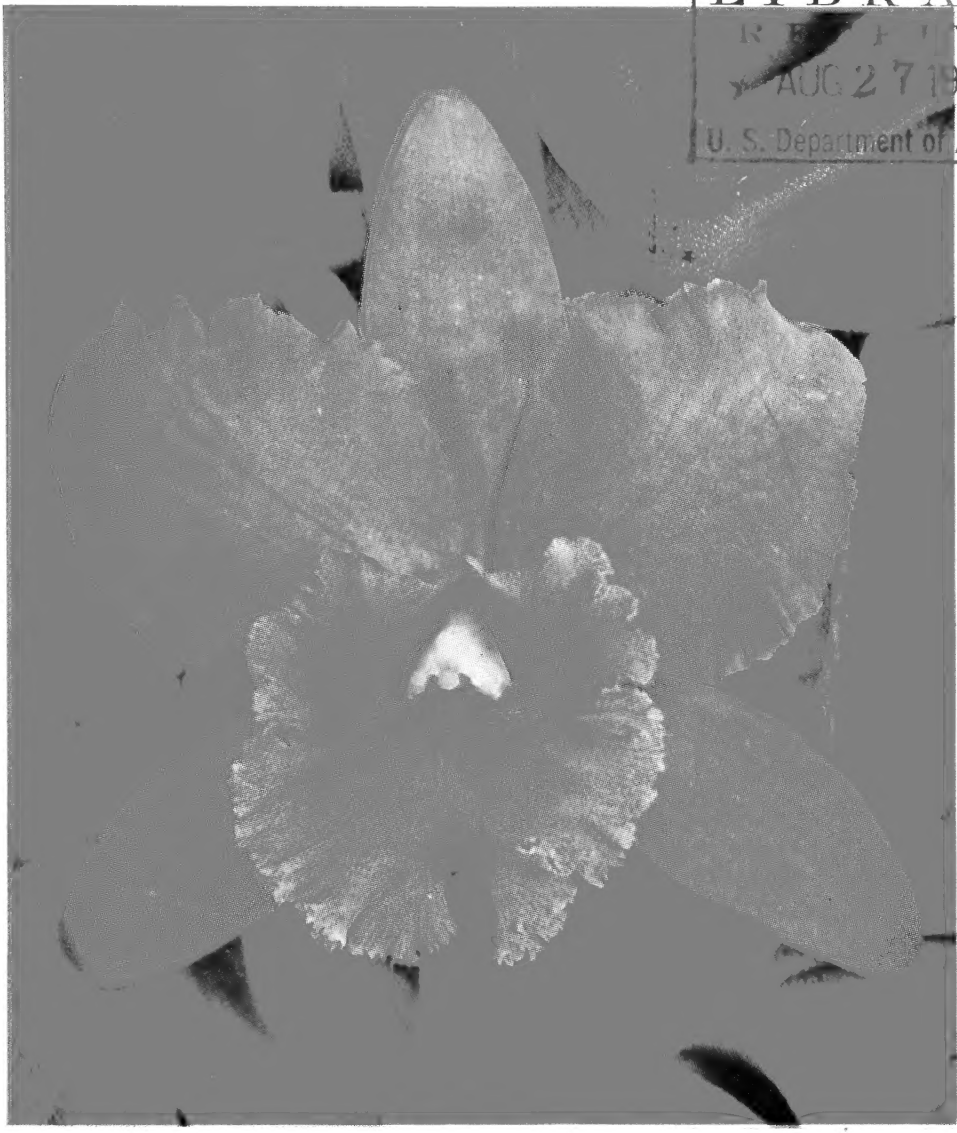
## **Historic, Archive Document**

Do not assume content reflects current scientific knowledge, policies, or practices.



62.17

LIBRARY  
RECEIVED  
AUG 27 1952 ★  
U. S. Department of Agriculture



*BLC MALVERN VAR. MELODY*

**R. H. GORE**

# *Orchids*

*1952-53 Catalogue*

# Orchids on Parade

We take pleasure in presenting to you our 1952-53 Catalogue, listing a selection of outstanding hybrids and seedlings which we offer at this time. We can say without reservation that our seedlings have become very popular. Our customers have acknowledged this fact by placing repeat orders for our quality stock. Our seedlings are now blooming in many, many collections today and we are pleased to know that our customers' satisfaction has been rewarded with the results of the years of experience we have had in the culture of Orchids.

Our collection of orchids is reinforced with the greatest collection of outstanding species in the world today. Our collection of *Trianae*, *Mossiae*, *Labiata*, *Gaskelliana* and many others, number well over two hundred varieties and rank second to none anywhere today. We are the proud owners of such outstanding species as:

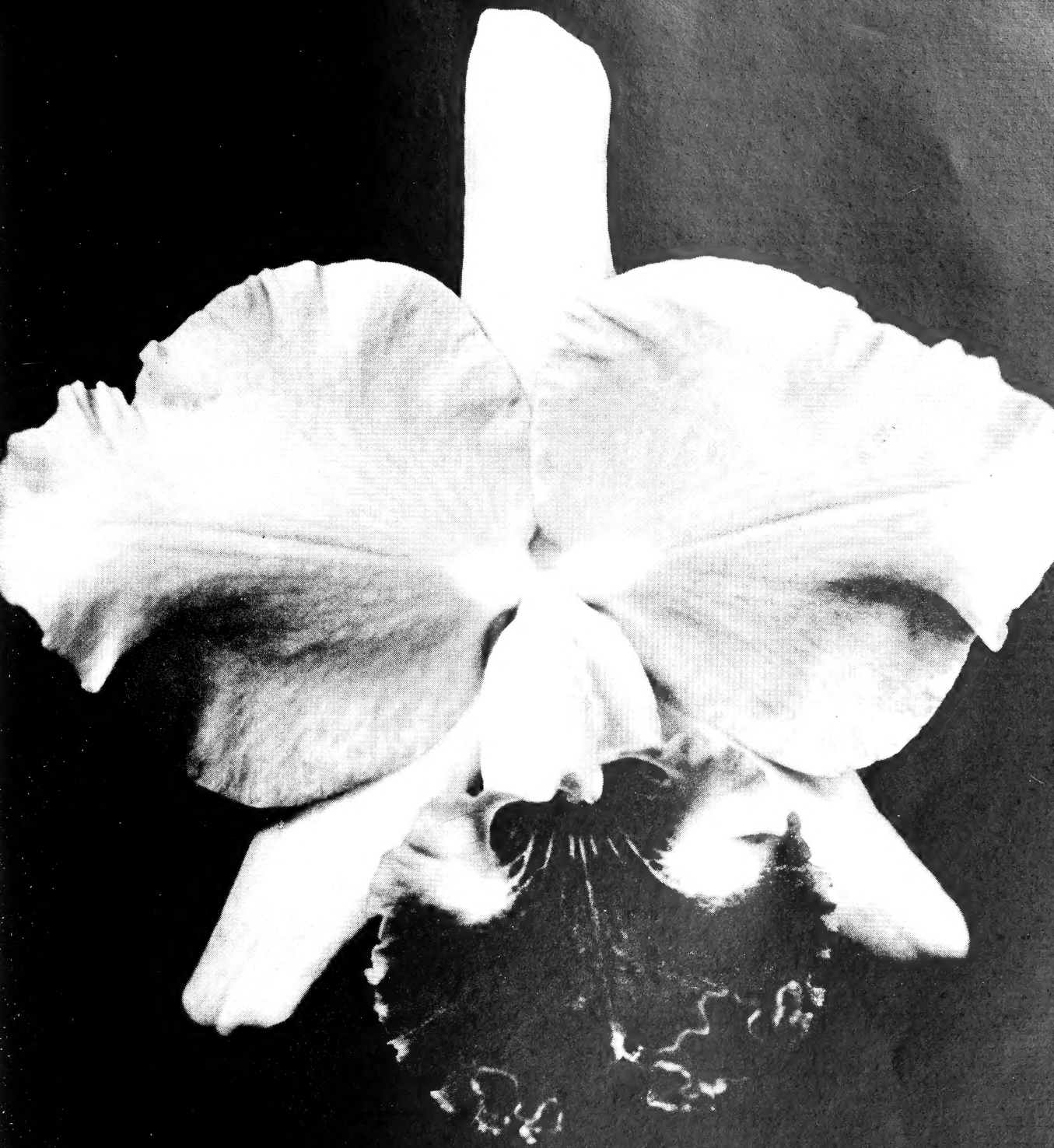
- |   |  |
|---|--|
| C. <i>Trianae</i> Broomhills Var.       | C. <i>Trianae</i> Var The Baron              |
| C. <i>Trianae</i> Var. Colossus         | C. <i>Mossiae</i> Reineckiana Young's Var.   |
| C. <i>Trianae</i> The Premier FCC RHS   | C. <i>Mossiae</i> Alba Excelsa               |
| C. <i>Trianae</i> The President         | C. <i>Mossiae</i> Wagnerii Magnifica FCC RHS |
| C. <i>Trianae</i> Mooriana FCC RHS      | C. <i>Mossiae</i> Var. Earl Leoffric         |
| C. <b>TRIANAE VAR MOTHER DO-</b>        | C. <i>Mossiae</i> Var. Haile Selassie        |
| <b>MINICAN</b>                          | C. <i>Gaskelliana</i> Alba                   |
| (The world's outstanding white          | C. <i>Labiata</i> Alba Var. Prince of Wales  |
| with colored lip variety of <i>Tri-</i> | C. <i>Trianae</i> Var. Elcelsior             |
| <i>anae</i> .)                          | C. <i>Trianae</i> Var. Sagamore              |

We have additional crosses not listed in this catalogue and should you desire types not listed herein, please write us as it may be possible that we can supply you with those items.

We list on the next few pages some of our stud plants which we have used in our breeding program. We only offer one of each variety as we are limited on all items listed. Periodic supplement lists of seed and seedlings will be sent out as our supply changes. Our outstanding stock has been constantly in demand and production has not, as yet, been adequate to meet the large number of requests for our choice stock.

For the first time we are offering this comprehensive, outstanding selection of stud plants, all of which are available at the present time. The plants listed are not re-made crosses, but are divisions of the actual plants we have used for breeding.

R. H. GORE - ORCHIDS  
BOX 211  
FORT LAUDERDALE  
FLORIDA



*LC. TITYMOMA VAR. SUPREME*  
(Parent of Our No. 133)

# Stud Stock

Cat.

| No. | Name and Description  | Bulbs | Pot | Price    |
|-----|---|-------|-----|----------|
| 1.  | SLC. PHENA VAR. SATURN FCC RHS. This is the best in Reds. There is beauty in every flower, form, grace and beauty unadorned. The symmetry of each bloom, along with its brilliance and radiance, has no equal in splendor of magnificence. (See Back Cover)—<br><i>Only One Plant Available</i> .....December | 5     | 6"  | \$500.00 |
| 2.  | SLC. ALBALIA STONEHURST VAR. AM RHS. This one is different—erect salmon sepals and petals which have a small spot of color at the petal tips. Sepals blend out to sunset orange. The deep velvet lip is sapphired by two bright eyes. Presents a very attractive flower. December                             | 5     | 5"  | 300.00   |
| 3.  | C. BELGICA VAR. ROBERT DOIG. This is a good type—excellent breeder—very prolific bloomer—strong grower. Lavender sepals and petals—dark lip. Wire for this one. December  | 5     | 5"  | 200.00   |
| 4.  | LC. PRINCESS ISHTAR, VAR. HAWAIIAN QUEEN FCC AOS. This one is exciting—it is very large, has well formed flowers of excellent color and is well worthy of its award—a good breeder. February  | 6     | 5"  | 150.00   |
| 5.  | LC. BALKIS, VAR. SOUTHERN QUEEN. One of our best types—dark lavender sepals and petals, with very dark lip—excellent form, texture and size, make this one a top notch stud. March  | 5     | 5"  | 150.00   |
| 6.  | LC. ACONCAGNA, VAR. MAGNIFICA. Very heavy texture—brilliant white with colored lip—strong grower—excellent one for breeding stock. February   | 5     | 6"  | 200.00   |
| 7.  | POTINARA MEDEA AM RHS. Excellent grower for type. Flowers very dark—deep lip—yellow eyes. Good size and form. December  | 5     | 5"  | 300.00   |
| 8.  | LC. ISHTAR, WESTONBIRT VAR. FCC RHS. An all time favorite which is producing popular hybrids today. Large graceful flowers combined with its rich lavender color, make this a must on your stud list. November  | 4     | 4½" | 175.00   |
| 9.  | C. ALWYNII, VAR. JANE FROMAN. This is tops in white with colored lips. Large, well rounded flowers of good texture, combined with the strong growth, make this one a very popular stud. January   | 6     | 5"  | 200.00   |
| 10. | C. EDITHIAE VAR. EXCELSIOR. This is an excellent type Edithiae. Short grower but flowers of heavier texture are produced—more so than the type. March   | 6     | 5"  | 125.00   |

*Cat.*

| <i>No.</i> | <i>Name and Description</i>  | <i>Bulbs</i> | <i>Pot</i> | <i>Price</i> |
|------------|--|--------------|------------|--------------|
| 11.        | LC. CYNTHIA ALBA FCC VAR. Outstanding, white with colored lip, having excellent qualities. The large showy flowers have excellent texture and form. This is a good item. February  | 5            | 5"         | 175.00       |
| 12.        | LC. PRINCESS WOODSTAR, VAR. RED FLARE. This one has grace. Its beautiful dark red lip presents a real brilliant contrast in front of the lavender sepals and petals. Seedlings from this stud are strong growers. January  | 6            | 5"         | 175.00       |
| 13.        | LC. PRINCESS ISHTAR, VAR. HILO. Similar to type, flowers as large but sepals and petals somewhat lighter in color. Worthy of an AM. February   | 5            | 6"         | 125.00       |
| 14.        | C. GIGAS F.M.B. FOWLER'S VAR. A very reliable stud for white with colored lip types. Has produced many excellent hybrids—one of its best is C. Enid Alba. May  | 8            | 5"         | 75.00        |
| 15.        | LC. BOADICEA VAR. BRITISH QUEEN. This has good possibilities. Combined with our South Esk var. Judy Doig FCC AOS, we have produced seedlings now in 1 <sup>3</sup> / <sub>4</sub> inch pots—all are good strong growers. Large flowers of good lavender color. February. | 6            | 7"         | 150.00       |
| 16.        | C. BOW BELLS VAR. LORENA GORE. A very good type. Large well formed white flowers—equal to award types. October   | 6            | 5"         | 150.00       |
| 17.        | BC. LYOTH VAR. MAGNIFICA. Large lavender—brilliant speckled lip of deep magenta and yellow—broad petals—darker flowers than regular brassos. March   | 5            | 6"         | 125.00       |
| 18.        | C. SUAVIOR VAR. AQUINII FCC RHS. A distinctive type, having a light shade of lavender embossed with two dark lavender markings on the petals. A good breeder and grower. June  | 6            | 5"         | 75.00        |
| 19.        | LC. PRINCESS MARGARET VAR. ELEGANCE. A very good type—excellent breeder. Good sturdy seedlings result and a very good flower as well. Lavender sepals and petals with a dark lip. Flowers very well formed. March  | 6            | 5"         | 100.00       |
| 20.        | BC. KENSINGTON VAR. CHALLENGER. A good heavy flower having excellent lavender blooms. The petals are darker than the type with a large lip—offers an attractive flower. June   | 6            | 5"         | 100.00       |
| 21.        | LC. MIRABELLE VAR. GRANDIFLORA. A very good strong grower—excellent for breeding. Showy lavender flowers have exceptionally good qualities. A must on your breeding program. May   | 5            | 6"         | 150.00       |

| <i>Cat.</i> |  |              |            |              |
|-------------|--|--------------|------------|--------------|
| <i>No.</i>  | <i>Name and Description</i>  | <i>Bulbs</i> | <i>Pot</i> | <i>Price</i> |
| 22.         | C. CREPUSCULE VAR. CRIMSON GLORY. A very good stud for dark color. Brilliant yellow eyes in the lip make a pleasing combination. Prolific and strong grower.   | May 4        | 4½"        | 100.00       |
| 23.         | BC. ALBION VAR. SNOW CLOUD. Large, healthy, robust grower. Excellent breeder which really puts vigor into its seedlings. Large white flowers are also well represented on thick stems.   | December 3   | 5"         | 100.00       |
| 24.         | C. HELEN ADAMS VAR EXQUISITA. An outstanding type—large lavender flowers, having good character. Well rounded flowers of good color.   | June 6       | 6"         | 100.00       |
| 25.         | BC. PRINCESS PATRICIA VAR. JURIST. A very good type—large showy flowers—well formed—good lavender sepals and petals—dark lip. Excellent grower. You will like this one.  | February 6   | 6"         | 150.00       |
| 26.         | C. STALIN VAR. STARDUST. The best of the type. (Illustrated.) Excellent size—good showy type. Prolific.  | July 8       | 5"         | 150.00       |
| 27.         | BLC. VOGELSANG GLORY VAR. GOLDEN BANNER. This one is distinctive, having a border of sunset orange around the edge of the golden yellow petals—the lip is outstanding and presents a colorful flower. If you want this one, send a wire. | November 6   | 6"         | 200.00       |
| 28.         | LC. DERNA VAR. LANGLEY FCC. This stud has been used a great deal and offers a good balanced yellow. Not a strong grower—but has good yellow sepals and petals with maroon lip.   | August 5     | 5"         | 100.00       |
| 29.         | LC. ODESSA VAR. GAY LADY. An excellent type—deep golden yellow sepals and petals—rich velvet maroon lip. This one is good.   | July 5       | 4"         | 150.00       |
| 30.         | LC. EVELYN MOUNTAIN VAR. DAFFODIL. An alluring yellow having distinctive qualities. Excellent golden yellow sepals and petals, deep lip. Small division.   | October 7    | 4"         | 75.00        |
| 31.         | BLC. ZANTURANO VAR. THE QUEEN. An excellent prolific type. Excellent breeder for quality yellows. Sepals and petals lemon yellow—old rose lip—very showy.  | November 7   | 5"         | 100.00       |
| 32.         | C. ADMIRABLE VAR. GOLDEN WINGS. An outstanding yellow having good size and form. Good grower—this one should be on your must list.   | November 7   | 5"         | 100.00       |



# Flowering Size Hybrids

*Cat.*

| <i>No. Name and Description</i>  | <i>Bulbs</i> | <i>Pot</i> | <i>Price</i>   |
|--|--------------|------------|----------------|
| 1. C. ANGUS VAR SUPERBA. Medium colored lavender of good size—easy grower—prolific bloomer.<br>July  | 6            | 5"         | \$ 40.00       |
| 2. C. ANN SANDER. This one is good. Excellent form and very well balanced colors of lavender. Lip dark like Remy Cholet and very pleasing. Order this one early.<br>January. | 6            | 6"         | 75.00          |
| 3. C. ARGENTIERES. An easy to grow white having medium sized flowers.<br>June.   | 9            | 5"         | 20.00          |
| 4. C. BARBARA BILLINGSLEY. A favorite white among many people—good qualities of features make this one an attractive buy.<br>February.                                       | 9            | 5"         | 45.00          |
| 5. C. BEN NEVIS. A good white for June weddings—easy to grow and it is a prolific bloomer.<br>June.  | 7            | 5"         | 40.00          |
| 6. C. BOW BELLS. Have only a few to offer of this exceptional white—husky growers—very good flowers.<br>Variable   | 6            | 6"         | 75.00          |
| 7. C. CARGILL AM MOS. Flowers large of excellent qualities—mauve sepals and petals—full dark lip. Prolific.<br>June.   | 6            | 5"         | 60.00          |
| 8. C. DRAGON. Very colorful yellow—deep yellow sepals and petals—dark full lip—medium size flowers.<br>August.   | 5            | 5"         | 45.00          |
| 9. C. DUPREANA. Even colored lavender of good qualities. Good commercial stud.<br>Variable.  | 5            | 6"         | 15.00          |
| 10. C. ELEANORE ALBA. Large showy white with colored lip. Excellent type for distinction. Bright eyes in the lip.<br>June.   | A 10<br>B 8  | 5"<br>5"   | 75.00<br>60.00 |
| 11. C. ENID. A popular hybrid found in most collections today—good size lavender flowers. Variable   | 8            | 6"         | 20.00          |
| 12. C. FAROES. Very dark type—excellent for contrast in color—rich deep dark lip. It really catches the eye.<br>July.  | 7            | 5"         | 45.00          |
| 13. C. HELEN ADAMS. Large—excellent type. Well formed flowers richly colored.<br>May.  | 7            | 5"         | 40.00          |
| 14. C. LES HOUCHES. Good commercial white having medium size flowers. Strong grower.<br>March  | A 6<br>B 6   | 5"<br>5"   | 20.00<br>20.00 |

| <i>Cat.</i> | <i>No. Name and Description</i>  | <i>Bulbs</i> | <i>Pot</i> | <i>Price</i> |
|-------------|--|--------------|------------|--------------|
| 15.         | C. MEM. MARY C. GORE. Demand for this type flower has been excellent. Showy white with colored lip—bright yellow eyes in the lip. June.            | 7            | 5"         | 50.00        |
| 16.         | C. NELL MONTGOMERY. A good white—flowers well formed. Prolific. June.  | 6            | 5"         | 20.00        |
| 17.         | C. NORMANDIE VAR. SEA RANCH. A good husky grower having well rounded flowers. Even colored lavender sepals and petals with a brilliant lip. March. | 5            | 5"         | 45.00        |
| 18.         | C. PALATINE. Medium size light lavender flowers—good one for easy culture for the amateur. Winter.   | 6            | 5"         | 20.00        |
| 19.         | C. PEETERSII VAR. VESUVIUS. Prolific bloomer—medium size flowers—soft lavender sepals and petals with darker lip. October.                         | 7            | 5"         | 50.00        |
| 20.         | C. REINDEER. Another easy to grow type. Lavender flowers. June.  | 6            | 6"         | 20.00        |
| 21.         | C. REMY CHOLET VAR. SPLENDENS. Excellent type. Large flowers of good lavender color. For stud purposes—very good. January                          | 7            | 5"         | 75.00        |
| 22.         | C. SEA RANCH. Light salmon colored sepals and petals with soft magenta lip—an unusual type having distinctive qualities. June.                     | 8            | 6"         | 60.00        |
| 23.         | C. SIMONE SANDER. Medium size lavender—even colored—a good item for the amateur. Easy grower. November.  | 6            | 7"         | 45.00        |
| 24.         | C. SNOWDEN. A medium white—good type for the amateur—easy grower. June   | 7            | 5"         | 25.00        |
| 25.         | C. STALIN. A good showy type having excellent color in the lip. Even colored lavender sepals and petals. Strong growers. June.                     | 6            | 5"         | 35.00        |
| 26.         | C. TRIUMPHANS. Medium lavender flowers having no unusual qualities. Easy grower for amateur. May.  | 6            | 6"         | 15.00        |
| 27.         | LC. ATLANTIS. Very good showy type—strong grower—lavender sepals and petals—very brilliant lip. July   | 5            | 5"         | 50.00        |
| 28.         | LC. BALKIS VAR. EXCELLENS. A good variety of the type. Rich dark lip—bright eyes. March.   | 6            | 6"         | 40.00        |
| 29.         | LC. BEAUFIGHTER. Excellent oddity—having gold sepals and petals with splash of red at base of petals near lip. Very dark blood red lip. August.    | 5            | 5"         | 60.00        |



*C. STALIN VAR. STARDUST*

*Cat.*

*No. Name and Description*

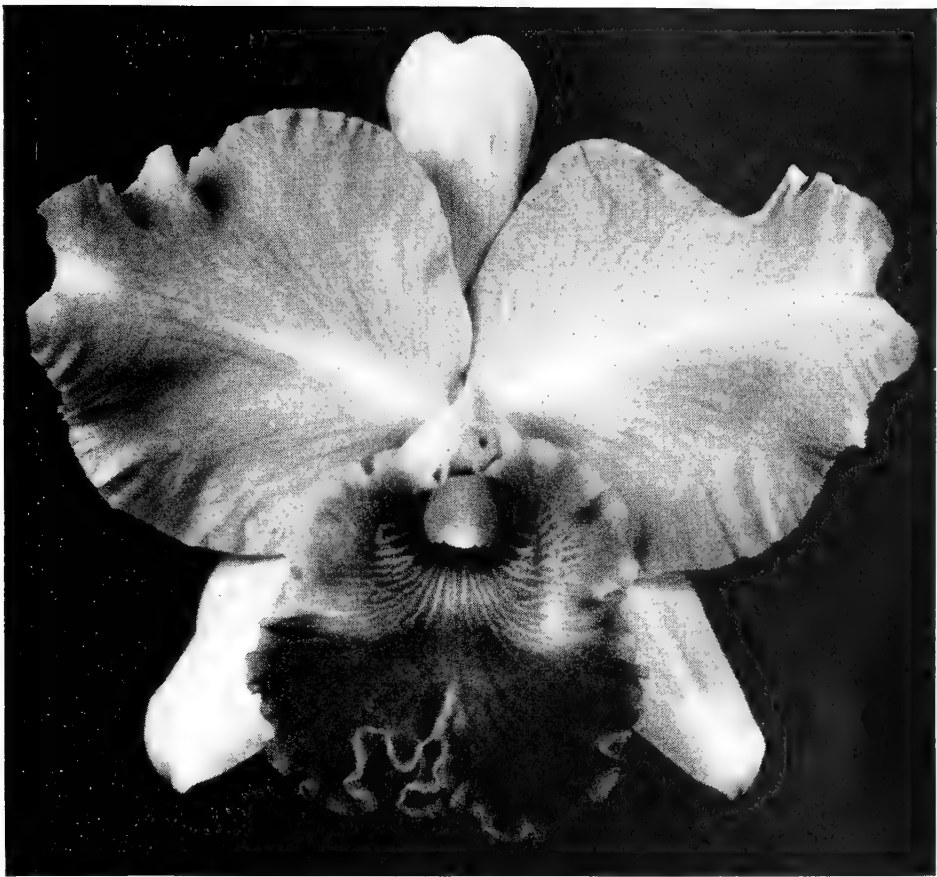
*Bulbs*

*Pot*

*Price*

|  |   |   |     |       |
|--|---|---|-----|-------|
| 30. LC. BELFRY. Lavender flowers, medium size.<br>June   |   | 5 | 5'  | 15.00 |
| 31. LC. COLENID. Very good type for the amateur.<br>Showy large flowers of good lavender color. May.                                     | A | 7 | 5"  | 20.00 |
| Smaller Plant  | B | 5 | 5"  | 15.00 |
| 32. LC. CORTINA. Light lavender sepals and petals—<br>old rose lip—prolific bloomer. June  |   | 5 | 6"  | 40.00 |
| 33. LC. COURONNE D' OR. Chartreuse sepals and<br>petals—dark velvet red isthmus lip—very showy.<br>Should be on your waiting list. July. |   | 6 | 5"  | 40.00 |
| 34. LC. DELILAH. Very showy—prolific type. Laven-<br>der sepals and petals—dark lip. It's a good type<br>to grow. June.                  |   | 6 | 5"  | 35.00 |
| 35. LC. DERNA. Bronze sepals and petals with yellow<br>background—dark red lip. Good type. July.   | A | 8 | 5"  | 45.00 |
|  | B | 5 | 4"  | 30.00 |
| 36. LC. DOLORES ZIEGFELD. Excellent prolific<br>type—lavender sepals and petals—wide flaring<br>lip. June.                               | A | 6 | 4½" | 35.00 |
| Larger plant   | B | 6 | 6"  | 45.00 |
| 37. LC. DONALD ROBINSON. A very good hybrid<br>having outstanding qualities—an excellent grower<br>—prolific bloomer. August.            |   | 5 | 5"  | 35.00 |

| <i>Cat.</i><br><i>No. Name and Description</i>  | <i>Bulbs</i> | <i>Pot</i> | <i>Price</i> |
|---|--------------|------------|--------------|
| 38. LC. ELISSA VAR. BETTY KEELING. Excellent hybrid—darker sepals and petals well formed—excellent breeder. Variable.   | 5            | 5"         | 50.00        |
| 39. LC. ERICA SANDER VAR. GIGANTEA. Unusual type—distinctive character—deep full lip with extra long petals in proportion. June.  | 6            | 5"         | 45.00        |
| 40. LC. EVA ROBINSON. Superb hybrid—large well formed, heavy textured dark lavender flowers—richly colored throughout. September  | A 6          | 5"         | 75.00        |
|   | B 5          | 4½"        | 35.00        |
| 41. LC. HELEN UNDERWOOD. Prolific—showy flowers—lemon yellow—old rose lip. Easy grower tall bulb type. September.   | 6            | 5"         | 45.00        |
| 42. LC. ISOTTA. Very heavy texture—well rounded petals of lavender. Very deep toned isthmus lip. Excellent grower. September.   | 5            | 6"         | 75.00        |
| 43. LC. KAPPA. Very heavy texture—good lasting qualities. Dark flowers well formed. May.  | 6            | 5"         | 35.00        |
| 44. LC. LUMABILIS. Prolific—robust grower—flowers extra heavy in texture—good lavender color. October   | 6            | 6"         | 35.00        |
| 45. LC. MAKIKI VAR. THE MAJOR. This one is distinctive—bold yellow area in the lip presents a colorful flower. September.   | 6            | 5"         | 45.00        |
| 46. LC. MEM. PETER SANDER. Tall lanky grower—large white colored lip flowers—yellow eyes that twinkle set in brilliant throat—easy grower and prolific bloomer. May-June. | 5            | 5"         | 45.00        |
| 47. LC. MIGNON. Medium size—dark type well rounded flowers. April.  | 5            | 7"         | 40.00        |
| 48. LC. NORA WHITE. Bronze type—isthmus lip—very showy—prolific. November—small Div.  | 8            | 4"         | 20.00        |
| 49. LC. PALOMINO VAR. VERA. Very outstanding salmon—deep velvet lavender lip—extra heavy texture. It is a favorite of all who have seen it. September                     | 5            | 4"         | 75.00        |
| 50. LC. PRINCESS PRUDENCE. This is an excellent grower—prolific bloomer and an all around good type to own. Put this one on your must list. June                          | 6            | 5"         | 40.00        |
| 51. LC. PROFUSION. Even colored lavender—well formed good textured flowers. September   | 6            | 6"         | 40.00        |



LC. KISMET VAR. ROTUNDA

Cat.

No. Name and Description

Bulbs

Pot

Price

- |  |   |    |       |
|--|---|----|-------|
| 52. LC. ROSAMUNDE. This one is good. Good grower—strong stems—prolific and a good lavender flower. August.   | 7 | 6" | 35.00 |
| 53. LC. SALLY SANDER. White with colored lip—the sepal and petal tips have splash of color—very attractive variety to have. June.  | 8 | 5" | 25.00 |
| 54. LC. SAROFUS. Very rich color—dark lip—yellow eyes—good grower and increases stock readily by side breaks. September.   | 6 | 6" | 60.00 |
| 55. LC. SOUTH ESK. Only a few of these available as they are in constant demand, especially the FCC varieties. Place your order early for this one. February.                                  | 6 | 6" | 60.00 |
| 56. C. FRED SANDER x LC. COLISEUM. Good colored lavender of medium size—excellent grower—prolific bloomer. November.   | 5 | 5" | 15.00 |
| 57. BC. APOLLO VAR. CHARM. Large showy flowers having good qualities. Light pastel shades of lavender combined with the darker lip makes this one an attractive addition to a collection. May. | 6 | 5" | 50.00 |

Cat.

| No. | Name and Description  |   | Bulbs | Pot | Price  |
|-----|---|---|-------|-----|--------|
| 58. | BC. ASTURIUS. Very showy Brasso—full flowers having light sepals and petals—dark lip. May.  |   | 6     | 6"  | 50.00  |
| 59. | BC. ANN SLADDEN. This is the best type Brasso we have to date. Easy to grow—as showy as BLC Nanette—color from white to suffused pink—should be a must on your list. Order this one early. Variable | A | 6     | 5"  | 40.00  |
|     |   | B | 7     | 5"  | 40.00  |
|     |   | C | 8     | 6"  | 50.00  |
|     |   | D | 5     | 5"  | 60.00  |
|     |   | E | 5     | 4½" | 50.00  |
|     |   | F | 8     | 6"  | 50.00  |
| 60. | BC. CORRIENTES VAR. MAGNIFICA. Large Brasso—even colored sepals and petals—large magenta lip—very showy type. May.  |   | 6     | 4"  | 30.00  |
| 61. | BC. FABIA VAR. HELEN UNDERWOOD. This is another good one—outstanding for the type—large showy flowers—full open lip. Put this one on your special list. December.                                   |   | 8     | 5"  | 60.00  |
| 62. | BLC. CALIGULA VAR. EXCELSA. Bold flowers—consistent February bloomer—generally three flowers per stem—easy to grow. February.   |   | 11    | 6"  | 50.00  |
| 63. | BLC. CASANTHEA. An all yellow flower—sepals, petals and lip. This is a rare item—only one plant available and will go to first order.   |   | 7     | 5"  | 150.00 |
| 64. | BLC. DAWN ANGELLA. Large heavy textured flowers—very well balanced and of good lavender color. November.  |   | 5     | 5"  | 30.00  |
| 65. | BLC. GOLDEN AGE. Very showy type large yellow—having large yellow area in the lip. Good growing type. November.   | A | 8     | 5"  | 40.00  |
|     |   | B | 7     | 5"  | 30.00  |
| 66. | BLC. HEATHER QUEEN VAR. ADMIRATION. This one is good. Large well formed pastel flowers excellent type for Brasso. March.  |   | 7     | 6"  | 60.00  |
| 67. | BLC. NUGGET. Very good type having cream sepals and petals and an old rose lip. Easy grower. November   |   | 6     | 5"  | 35.00  |
| 68. | BLC. PEACE. Variable type from bronze to yellow sepals and petals—most types have full lip. A distinctive type. December.   |   | 5     | 4"  | 35.00  |
| 69. | BLC. VISCOUNTESS. Large heavy textured lavender flowers—good lasting qualities—robust grower. One you will like. May.   |   | 5     | 5"  | 25.00  |



A SECTION OF OUR ADULT PLANTS

| <i>Cat.</i> |  |              |            |              |
|-------------|--|--------------|------------|--------------|
| <i>No.</i>  | <i>Name and Description</i>  | <i>Bulbs</i> | <i>Pot</i> | <i>Price</i> |
| 70.         | C. BELGICA. Medium size lavender flowers—vivid lip of good conformation. August.                               | 6            | 5"         | \$40.00      |
| 71.         | C. LORD GORT. Large lavender flowers of good size and texture—excellent commercial type. August.               | 5            | 7"         | 40.00        |
| 72.         | LC. COLENID. Excellent type for the amateur—medium size lavender flowers—good grower. August.                  | 10           | 6"         | 35.00        |
| 73.         | LC. SEVIGNE. Medium size lavender flowers—dark rich vivid lip—good texture. August.                            | 7            | 5"         | 45.00        |
| 74.         | LC. ABYDOS. Excellent type for the amateur—medium size lavender flowers of good commercial quality. September. | 10           | 6"         | 40.00        |
| 75.         | BC. BERGEN. Large, well formed medium lavender flowers—a good showy type. August.                              | 6            | 5"         | 35.00        |
| 76.         | C. ACHTENDRIESII. Medium size lavender flowers—excellent grower. Good type for the amateur. August.            | 6            | 5"         | 25.00        |

The preceding stock listed is all of good quality and is offered subject to prior sale, therefore, please state second or third choices. Further information requested will be given upon application. Our standardization policy has met the approval of our customers in the past and we shall continue to give our customers assured satisfaction on plant purchases.



C. GLORIETTE SUPERBA FCC RHS

*Quality And Perfection*





LC. PRINCESS JULIANA VAR. VIKING

*In Things We Wish For*

# Seed Pods Now In Development

All of our seed listed is priced at \$15.00 per three flask package. We continue to use only the best of studs, therefore, our seedlings will be superior in quality.

We shall maintain our policy on seed as we have in the past, we guarantee satisfaction to our seed customers.

Please state second and third choices in the event your first selection does not prove fertile or is sold.

The seed listed below should be ripe approximately ten to twelve months after date of crossing. All pods listed are now in development.

Mail us your reservation blank for seed and you will be notified when the pods are ripe, if fertile.

| <i>Cross No.</i> | <i>Parents</i>   | <i>Month Crossed</i> |
|------------------|--|----------------------|
| 981              | Blc. Armida var. Sunset Gleam x C Bow Bells var Dorothea.<br>(Yellow on White)         | November             |
| 984              | Lc. Hyperion x Lc. Princess Woodstar var. Red Flare. (Lavender)                        | November             |
| 987              | Lc. Hyperion x Lc. Ludgate var. Lure. (Lavender)                                       | November             |
| 993              | Blc. Lucy Farfan x C. Trianae var. Spring Morn.<br>(Yellow on white with colored lip)  | November             |
| 995              | Slc. Dorothy Watkins x C. Ann Sander var. Helen Underwood.<br>(Dark lavender)          | December             |
| 1002             | Blc. Peace x C. Trianae var Washington Roebling.<br>(Yellow on white with colored lip) | December             |
| 1003             | (Blc. Xanthea x Lc. Moloch) x Blc. Peace. (Yellow to salmon)                           | December             |
| 1007             | Bc. Hartland x Lc. Malta. (Dark lavender)  | December             |
| 1012             | Bc. Olna x C. Trianae var. Suzanne Verdonck. (White)                                   | December             |
| 1013             | C. Michaelmas x Bc. Galatee var. Helen. (Lavender)                                     | December             |
| 1014             | Lc. Princess Prudence x Blc. Mercilope. (Lavender)                                     | January              |
| 1015             | Blc. Ermine var. Salmon Glow x C. Edithiae White Empress.<br>(Yellow on white)         | January              |
| 1019             | C. Mary Carrico var. Henry Gore x Lc. Princess Prudence. (Lavender)                    | January              |
| 1025             | Slc. Lindores var. Peerless x Potinara Belgravia. (Red)                                | January              |
| 1028             | Potinara Tripoli Superba x Lc. Non Pariel Gore's var. (Lavender)                       | January              |
| 1030             | Lc. H. G. Alexander FCC RHS x Lc. Gaillard (Lavender)                                  | January              |
| 1031             | Lc. H. G. Alexander FCC RHS x C. Ann Sander var Perfecta.<br>(Lavender)                | January              |
| 1036             | Phal. Rimestadiana x Phal. Doris. (White)  | March                |
| 1037             | Phal Doris x Phal. Rimestadiana. (White)   | March                |
| 1043             | Blc. Nigon var. Perfecta x (Lc. Monarmus x C. Belgica).<br>(Dark lavender)             | April                |
| 1045             | Blc. Dorothea x C. Mlle. Louise Pauwells. (Yellow on white)                            | April                |
| 1047             | Slc. Miami var. Oxblood x Lc. Juliet, Westonbirt var.<br>(Oxblood on peach)            | April                |
| 1048             | C. Mossiae Reineckiana, Young's var. x C. Enid Alba. (White C/L)                       | April                |
| 1049             | Phal. Lueddemanniana x Phal. Sanderiana. (Pink)  | May                  |
| 1050             | C. Crepuscule var. Crimson Glory x C. Mossiae var. Earl Loeffric.<br>(Lavender)        | May                  |



*SEED POD IN DEVELOPMENT*  
(Above)

*FLASK*  
(Right)



## Flasks

Flasks are packed with our usual care in special wooden boxes to help insure safe delivery. Some shipments, however, may receive rough handling enroute, therefore, an inspection, for your protection, upon arrival, is advisable. All flasks listed are of the 500 ml. size. The seedlings in the flasks will not all be ready for transplanting into community pots when you receive them, however, all flasks will be shipped by November 1st.

All flasks listed are priced at \$10.00 each, except those marked by an (\*) asterisk, which are \$15.00 each.

| <i>No.</i> | <i>Parents</i>   | <i>Color</i> | <i>Flowering Time</i> |
|------------|--|--------------|-----------------------|
| 623        | C. Trianae, Broomhills var. x C. Edithiae, var. White Empress FCC RHS .....  | White        | December              |
| 627        | Slc. Vulcan, var. Governors' Club x C. Trianae, var. J. Grobben Foncee ..... | Very Dark    | January               |
| 731        | Lc. Elissa Wealdon FCC MOS x Lc Princess Prudence .....                      | Lavender     | July                  |
| 734        | C. Volga x (Bc. Marie-Marie x C. Queen Mary).....                            | Pink         | July                  |
| 741        | Lc. Elissa Wealdon FCC MOS x Lc. Ishtard var. Purpurea .....                 | Lavender     | July                  |
| *760       | Lc. Nugget x Blc. Zanturano var The Queen .....                              | Yellow       | August                |

| <i>No.</i> | <i>Parents</i>  | <i>Color</i>      | <i>Flowering Time</i> |
|------------|---|-------------------|-----------------------|
| 803        | C. Princess Etta x Lc. Princess Margaret, var. Exquisita FCC .....          | Lavender          | August                |
| *804       | C. Prince Shimadzu x Potinara Medea AM RHS                                  | Very Dark         | September             |
| *817       | (C. Aeneas x Blc. Golden Queen) x (Blc. Xanthea x Blc. Aprica) .....        | Yellow            | November              |
| *821       | Lc. South Esk var. Judy Doig FCC AOS x C. Labiata var. Goliath .....        | Lavender          | December              |
| 837        | Oncidium Papilio x Self .....   | Yellow and Orange | June                  |
| 846        | Blc. Lyoth Magnifica x Lc. Cassandra FCC .....                              | Lavender          | October               |
| 875        | Lc. Hyperion x Lc. Invicta FCC RHS .....                                    | Lavender          | December              |
| *890       | Blc. Malvern var. Melody x Lc. Andromeda .....                              | Yellow            | December              |
| *900       | Blc. Lucy Farfan x Blc. Peace .....   | Yellow            | January               |
| *901       | Blc. Peace x Blc. Lucy Farfan .....   | Yellow            | January               |
| 902        | Blc. Lucy Farfan x Blc. Tiara var Crown Jewel ..                            | Yellow and Bronze | January               |
| 905        | Blc. Angelus x C. Trianae var. Circe .....                                  | Pink              | January               |
| *915       | Slc. Anzac Orchidhurst var. FCC RHS x Blc. Nigon var. Perfecta .....        | Red               | March                 |
| *916       | Slc. Anzac Orchidhurst var. FCC RHS x Slc. Lindores .....                   | Red               | March                 |
| *917       | Slc. Anzac Orchidhurst var. FCC RHS x (Blc. Viscountess x Lc. Hertha) ..... | Red               | March                 |
| *918       | Slc. Anzac Orchidhurst var. FCC RHS x (C. Clotho x Lc. Memling) .....       | Red               | March                 |
| 969        | Blc. Dawn Angella x Lc. Governor Gore .....                                 | Lavender          | April                 |

#### NON-WARRANTY

*Because growing conditions and cultural methods are not the same in every locality, we—R. H. GORE-ORCHIDS—give no warranty express or implied, as to the productiveness of any of the plants we sell and will not be in any way responsible for the crop. Our liability is limited to the purchase price of plants. All prices listed in our catalogue are F.O.B., Fort Lauderdale, Florida.*



3½"

3"

2"

1¾"

## Hybrid Seedlings

Our seedlings have been widely acclaimed by those who have received them and have seen them growing at our range. We believe our policy which we established long ago, has been of great value to our customers as well as ourselves. We can now offer a selection of seedlings, many of which have proven our policy, that we select breeding stock that should produce strong vigorous growers, having excellent form, color and texture.

### INDIVIDUAL POTS

| <i>Cross No.</i> | <i>Description</i>  | <i>Size</i>                | <i>Price</i>           |
|------------------|---|----------------------------|------------------------|
| 3                | Lc. Queens Bouquet (C. Titania x Lc. Adina). Flowers of good quality have been produced from this cross. A brilliant rich magenta lip is well balanced, producing flowers of good form. December—Lavender .....   | 4" Pot                     | \$10.00                |
| 6                | Blc. Dazzler—(Blc. Helmsdale x Lc. Joseph Baker). Large flowers of light lavender sepals and petals and a wide flaring lip of deeper hues, presents a dazzling type. February—Lavender  | 4" Pot<br>5" Pot           | 8.00<br>10.00          |
| 9                | Lc. Epoch—(Lc. Karen x Lc. Tartan). Many fine reports have come in on this one. We have produced flowers of good size and dark colors. The deep lavender lip has well defined lines of yellow separating the bright eyes. Vigorous growing type. Nov.-Dec.—Lavender | 3" Pot<br>4" Pot<br>5" Pot | 8.00<br>10.00<br>18.00 |
| 10               | C. Marie Webb—(C. Mab x C. Nutley Alba). The majority of this type have produced white with colored lip flowers. Some may have flowers having a light lavender shade throughout with the C. Mab influence. May-June—Variable.....                                   | 3" Pot<br>4" Pot<br>5" Pot | 6.00<br>8.00<br>12.00  |

| <i>Cross No.</i> | <i>Description</i>   | <i>Size</i> | <i>Price</i> |
|------------------|--|-------------|--------------|
| 29               | Lc. Princess Margaret x C. Mossiae. Good lavender flowers for late spring and early summer. Flowers have exceptional lasting qualities. April-May—Lavender .....   | 3" Pot      | 6.00         |
|                  |  | 4" Pot      | 8.00         |
|                  |  | 5" Pot      | 12.00        |
| 30               | Zygopetalum Mackayi. We offer a small quantity of this unusual botanical. The sepals and petals are a light yellowish green blotched with purplish brown. The lip spotted with violet-purple. ....   | 2½" Pot     | 3.00         |
|                  |  | 3" Pot      | 5.00         |
| 33               | C. Mary Carrico (C. G. P. Walker x Lc. Woltencia). This one has proved outstanding. The dark lavender sepals and petals and rich dark lip, combined with the excellent form, make this a want item on your list. Jan.-Feb.—Lavender .....  | 4" Pot      | 10.00        |
|                  |  | 5" Pot      | 18.00        |
| 44               | C. Martha (C. Ella Mae Sutton x C. Mendelii Alba). A prolific white of good qualities. A dependable spring and early summer bloomer makes this a valuable type for holiday stock. Feb.-June—White .....  | 2½" Pot     | 3.00         |
|                  |  | 3" Pot      | 6.00         |
|                  |  | 4" Pot      | 8.00         |
|                  |  | 5" Pot      | 15.00        |
| 53               | Bc. Jubilee (Bc. Seafoam x C. Trianae). Some interesting types have developed from this cross. Extra heavy growth and texture have made this one a popular type to grow. Flowers are variable, from white to white with colored lip, to suffused pink. Dec.-March .....  | 1¾" Pot     | 1.50         |
|                  |  | 2" Pot      | 2.00         |
|                  |  | 2½" Pot     | 3.00         |
|                  |  | 3" Pot      | 4.00         |
|                  |  | 4" Pot      | 8.00         |
| 109              | C. Helene Williams (C. Bobbie Jewell x C. Barbara Dane). Reports on this type have been very favorable. The large white heavy textured flowers of good form have been reported very similar to Bow Bell types. Sept.-Oct.—White .....  | 4" Pot      | 10.00        |
|                  |  | 3" Pot      | 8.00         |
| 111              | C. Pearl (C. Blanchleys x C. Bobbie Jewell.) A type similar to cross No. 109. Flowers are not as large but are very proliferous. The snowy whiteness of this hybrid presents an interesting flower. Sept.-Oct.—White .....   | 2" Pot      | 2.50         |
|                  |  | 3" Pot      | 8.00         |
|                  |  | 4" Pot      | 10.00        |
| 122              | Bc. Caronis (Bc. Albion x C. Mossiae Wagnerii Magnifica FCC RHS). An excellent white to suffused pink Brasso should be produced here. The combination of the heavy texture of Albion and good form of the Mossiae should blend to produce an exhibition flower. Supply limited. Winter—Variable .....  | 2" Pot      | 2.50         |
| 133              | Lc. Robert Doig (C. Belgica x Lc Titymoma). The most popular seedling in our range today. Our supply is limited as demand has been heavy for this variety. The broad overlapping petals and even color of the sepals and petals and rich dark full lip combine to produce an outstanding hybrid. Many award types should be forthcoming from this outstanding hybrid. Dec.-Jan.—Lavender ..... | 3" Pot      | 8.00         |
|                  |  | 3½" Pot     | 10.00        |
| 170              | (C. Crepuscule var. Crimson Glory x C. Amabilis). A very dark hybrid will be the result of this cross. A very dark blood red lip protruding from the rich dark lavender sepals and petals will make this a good, well balanced hybrid. March-June—Lavender .....   | 1¾" Pot     | 1.50         |
|                  |  | 2" Pot      | 2.00         |
|                  |  | 3" Pot      | 4.00         |



WE LIKE VIGOR IN OUR SEEDLINGS

| <i>Cross No.</i> | <i>Description</i>  | <i>Size</i>                        | <i>Price</i>         |
|------------------|---|------------------------------------|----------------------|
| 197              | (C. Leda x Lc. South Esk var. Sea Ranch). A very dark well formed hybrid should result from this cross. Robust seedlings are now growing in the two pot sizes listed. Feb.-March. Lavender .....  | 1 3/4" Pot<br>3" Pot               | 1.50<br>4.00         |
| 208              | Lc. Escape (Lc. Cameronian Alba x C. Priscilla Alba). White with colored lip of good quality for May and June weddings. A combination of quality flowers and sturdy growth will produce a desirous flower for the bride. May-June—W-C/L.....  | 3" Pot<br>4" Pot                   | 4.00<br>8.00         |
| 214              | Lc. Princess Esk (Lc. South Esk var. Southerner x Lc. Princess Ishtar). Large bold flowers, well formed and of excellent color markings, make this hybrid interesting, award types will predominate. Lavender sepals and petals with a deep magenta lip will make this one a popular item. Feb.-March—Lavender..... | 1 3/4" Pot<br>2" Pot               | 1.50<br>2.00         |
| 226              | C. Edithiae var. La Madelon x Bc. Seafoam var. Snowsheen. A good winter white Brasso, with some pink suffusion, will prevail in this large type flower. A vigorous grower, the flowers will have size, good form and texture. March—Variable  | 1 3/4" Pot<br>2" Pot<br>2 1/2" Pot | 1.50<br>2.00<br>3.00 |
| 245              | Lc. Princess Ishtar var. Hawaiian Queen AM AOS x Blc. Louisa. Large exhibition type flowers of dark features should prevail here. The combination of the two studs, we believe, will make a truly outstanding hybrid. Extra heavy texture should also be prominent. Supply limited. Feb.—Lavender .....             | 1 3/4" Pot<br>3" Pot               | 1.50<br>4.00         |

| <i>Cross No.</i> | <i>Description</i>  | <i>Size</i>                  | <i>Price</i>         |
|------------------|---|------------------------------|----------------------|
| 253              | Lc. Princess Ishtar var. Hawaiian Queen AM AOS x Lc Kismet var. Rotunda. For excellence in form and color this one should take top honors. The award characteristics of the Princess Ishtar, blended with the form and texture of Kismet, will, undoubtedly, offer a flower of outstanding features. March—Lavender ..... | 1¾" Pot                      | 1.50                 |
| 255              | C. Alwynii var. Jane Froman x Lc. Hassallii Alba Cowans var. FCC. This is the most outstanding white with colored lip we have in seedlings to date. A definite rich dark full lip portrayed before a snowy white background will present an outstanding combination of color. Dec.-March—W-C/L.....                       | 1¾" Pot<br>2" Pot            | 1.50<br>2.00         |
| 259              | (C. Beppo x C. Luegeae) x Lc. Ludgate. An excellent lavender for Easter. Prolific and vigorous growing habits combined will make this one a valuable item. April—Lavender .....   | 2" Pot                       | 2.00                 |
| 260              | C. Suavior var. Glory x C. Rita Sladden. An unusual type will result from this cross. The petals will be definitely marked with a splash of deep color. The plants are vigorous growers and will be on the want list of those who see them in bloom. April—Lavender .....   | 1¾" Pot<br>2" Pot<br>2½" Pot | 1.50<br>2.00<br>3.00 |
| 267              | Lc. Avignon var. Flora x C. Empress Frederick. This one will be exceptionally dark. The deep hues of color from each parent added to the texture of Avignon and form of Empress Frederick will produce something nice. May-June—Very dark.....  | 2" Pot<br>2½" Pot            | 2.00<br>3.00         |
| 268              | Inverted cross of No. 267 .....   | 2" Pot                       | 2.00                 |
| 271              | Lc. Avignon var. Flora x C. Amabilis. Another very dark type produced here. The proliferous quality of Amabilis will add much to this cross. May-June—Very dark.....  | 1¾" Pot<br>2" Pot            | 1.50<br>2.00         |
| 272              | C. Labiata Alba var. Prince of Wales x C. Eleanore Alba. An excellent combination which should offer choice flowers for June weddings. June—W-C/L .....   | 1¾" Pot<br>2" Pot<br>2½" Pot | 1.50<br>2.00<br>3.00 |
| 277              | Potinara Tripoli Superba x Lc. Elissa Wealdon FCC RHS. Many of these have been sold and we now offer a limited few in a small size pot. An excellent dark flower of good size should result from this cross. March-April—Very dark. ....  | 1¾" Pot<br>(Limited)         | 2.00                 |
| 283              | Lc. South Esk var. Judy Doig FCC AOS x Lc. Boadicea var. British Queen. Since winning the award as "Best in the Show" in Miami in 1951, seedlings of this variety of South Esk have been very popular. We predict outstanding exhibition flowers from this cross. Feb.-March—Lavender .....                               | 1¾" Pot<br>2" Pot            | 2.00<br>2.50         |
| 321              | Bc. Mrs. Robert Patterson x C. Trianae. Excellent stock for the winter holidays. Vigorous growers, proliferous bloomers, make this lavender popular for its good qualities over the winter holiday season .....   | 1¾" Pot<br>2" Pot            | 1.50<br>2.00         |
| 325              | Lc. Princess Marbella (Lc. Princess Margaret x C. Trianae). Another popular hybrid for the Christmas and New Year's holiday. Stout plants will produce many excellent flowers from this hybrid. Dec.-Jan.—Lavender .....  | 1¾" Pot                      | 1.50                 |





OUR SEEDLING HOUSE NO. 7

| <i>Cross No.</i> | <i>Description</i>   | <i>Size</i>       | <i>Price</i>   |
|------------------|--|-------------------|----------------|
| 354              | Blc. Nigeria x C. Winnietha. Another unusual type. The large pink Brasso was combined with the solid pink Winnietha which should produce heavy textured solid pink flowers with some yellow in the lip. Jan.—Pink .....  | 2" Pot            | 2.00           |
| 362              | C. Michaelmas x C. Trianae. A commercial lavender for the Yuletide holidays. Dec.-Jan.—Lavender .....  | 1¾" Pot<br>2" Pot | 1.50<br>2.00   |
| 394              | Lc. South Esk x C. Gigas. A very good type should be the result of this cross. Prolific, robust growers, combined with flowers of quality, should make this one a popular hybrid. May-June—Lavender .....  | 1¾" Pot<br>2" Pot | 1.50<br>2.00   |
| 407              | C. Souvenir Louis Sander x C. Astron. An excellent white having heavy texture should be the result of this mating. The Astron type generally produces five flowers per stem and combining this quality with other outstanding features of the larger Souvenir Louis Sander, should make this hybrid very popular. June—White ..... | 1¾" Pot           | 1.50           |
| 491              | Lc. Canhamiana Alba (L. Purpurata x C. Mossiae Reineckiana, Young's var.). This has long been known as an outstanding white with colored lip. Its strong growing habit and proliferous stem of flowers, makes this still a popular hybrid. May-June—White C/L .....  | 4" Pot<br>5" Pot  | 10.00<br>18.00 |

# Round The



VANDA

## JANUARY - FEBRUARY - MARCH

C. TRIANAE—a reliable cattleya for this time of the year. This specie is easily grown and will often put forth two growths each year. Colors range from light to medium shades of lavender. The lip is darker and often has yellow markings in the throat area ..... **\$7.50 and up**

PHALAENOPSIS—a very showy spray type flower which often lasts from six to eight weeks in bloom. They require more moisture than other type orchids but do not like wet feet all the time ..... **\$7.50 and up**

Other types flowering at this time: Bc. Jubilee, Blc. Dazzler, Lc. Queen's Bouquet, Dendrobium Nobile and many other varieties.

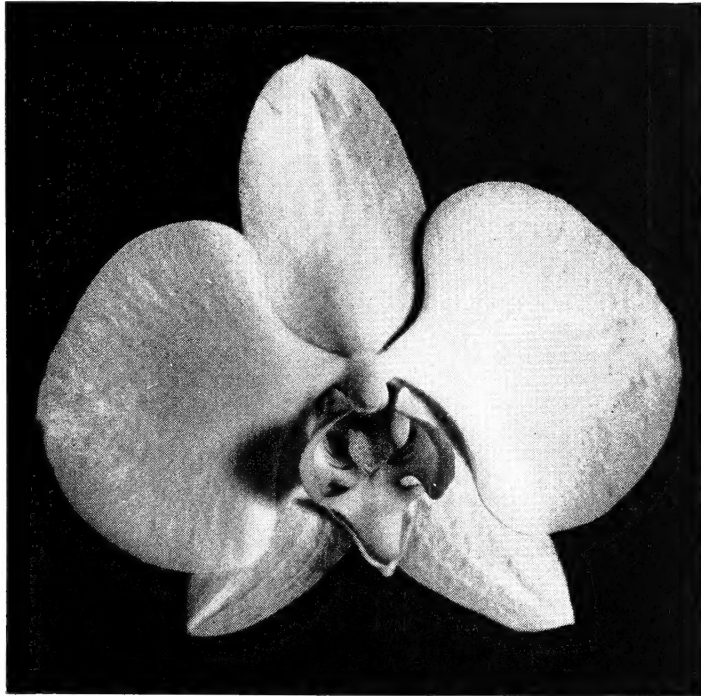
## APRIL - MAY - JUNE

C. MOSSIAE—a good specie having more flowers per stem than Trianae and offers a wider color range. Colors range from light lavender shade to deeper lavender sepals and petals ..... **\$7.50 and up**

VANDA TERES bloom profusely at this time of the year. Light shades of pink and lavender flowers are produced on floriferous stems, often carrying from six to ten flowers at one time ..... **\$3.50 and up**

Other types flowering at this time: Lc. Canhamiana, C. Cyrod, C. Martha, C. Marie Webb, Lc. Escape, Dendrobium Moschatum and many other varieties.

# Calendar



*PHALAENOPSIS*

## JULY - AUGUST - SEPTEMBER

**CATTLEYA GIGAS**—A popular specie, having more flowers per stem than most cattleyas. It's not uncommon to have eight large flowers on one stem. Lavender sepals and petals, with a dark magenta lip, having yellow eyes, make this a popular specie. .... \$7.50 and up

**VANDA ROXBURGHII** and other type Vandas are in flower, generally, during June and July. The small chartreuse and buff spotted flowers of Vanda Roxburghii make this a popular Vanda for it has unique characteristics ..... \$5.00 and up

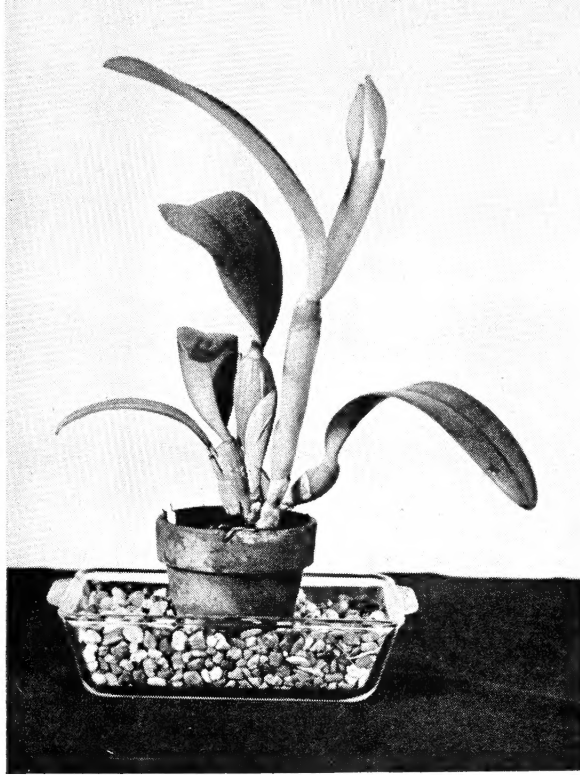
**DENDROBIUM PHALAENOPSIS**—a very showy orchid—will bloom profusely during September and early October. This spray orchid can be found having from ten to twenty-five flowers to a stem and even more on a very large plant. The pink flowers of the Delicata variety should be an attractive addition to your collection ..... \$3.50 and up

Other types flowering at this time: C. Helene Williams, C. Pearl and many other varieties.

## OCTOBER - NOVEMBER - DECEMBER

**C. FABIA**—a dark flowering type popular with all orchid growers for its prolific features. The lip of this hybrid is very dark and the sepals and petals are much darker, on an average, than most cattleyas. .... \$10.00 and up

Many other hybrids are available that bloom at this time of the year, such as: Lc. Epoch, Lc. Robert Doig and many other varieties. Types too numerous to list are available for different seasons of the year. Write us and we can prepare a special offering for you.



*CONTAINER FOR HOME GROWN ORCHIDS*

## General Care

Orchids are easy to grow and require no more attention than any other plant for successful culture. The plants require a thorough watering, then a chance to dry out before the next watering. Adult plants require less water in proportion to small seedlings. If in doubt about giving your plant water, let it go for another day for it is far better to have a plant on the dry side than to give it too much water. If your plant starts to show excessive shriveling in the bulbs and the leaves feel soft and fleshy, but your plant shows good root action, your plant requires more water. If your plant has plump bulbs and has dark rich green leaves, and some black spots show up in the leaves, you generally consider the plant soft and, therefore, less water is required, but more light. Do not go to extremes when moving your plants about for one may burn a plant severely if too much sun is given a plant that has been used to heavy shade.

If the new growth appears soft and thin, as well as being rich green in color, then your plant is growing too soft.

Orchids in the home may be grown successfully if one can offer the plants conditions which are somewhat similar to greenhouse culture. A shallow dish may be used which can be filled with pebbles. Fill the dish half full of water and place the pot on the pebbles, such as is illustrated above. Orchids can be placed in the east window early in the morning and in the west window during the late afternoon. Indirect light during the hot summer months after 9 A. M. and before 3 P. M. should be given but no direct sunlight at that time, unless shaded overhead with slats.

If your orchids grow best for you and produce flowers through your own method and efforts, by all means, continue to grow them in that manner.

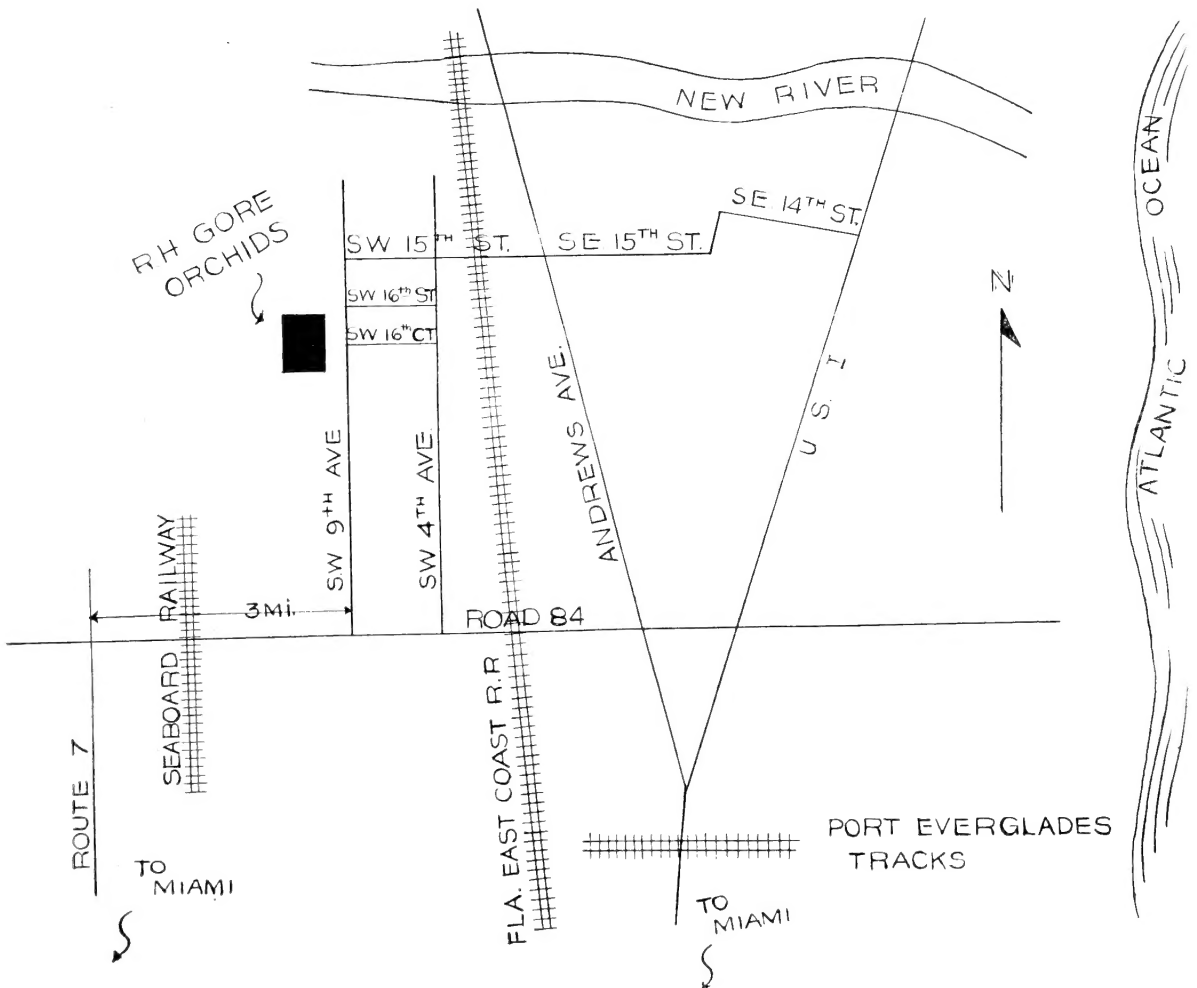
D.D.T. will take care of most insect problems on your orchids. Orchids can be fed occasionally with liquid chemicals, but do not overfeed. Small seedlings can be fed safely once every two weeks and adult plants once a month.

Several helpful cultural books are available today and one can obtain valuable information from them. We shall be pleased to help anyone by answering any cultural questions sent us.



AERIAL VIEW OF GREENHOUSE

## How To Get To Our Range





*SLC. PHENA VAR. SATURN FCC RHS*

It is our pleasure for customers and friends to visit our greenhouses located in Fort Lauderdale, Florida, the Venice of America. Please plan your visits during our regular business hours, 8 A. M.-4 P. M.—Monday through Saturday.

## **R. H. GORE** - *Orchids*

1611 Southwest Ninth Avenue  
Fort Lauderdale, Florida